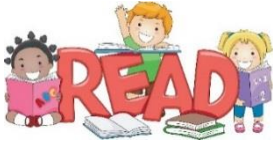




St Mark's C E Primary School

Ramslye Road
Tunbridge Wells
Kent
TN4 8LN
www.st-marks.kent.sch.uk
Tel: 01892 525402

Mr Robin Dungate B.Ed. (Hons), BSc, NPQH
Headteacher



10th November 2017

Newsletter No 9

The House Cup was won by Saturn

Admission to Primary School

If you have a child born between 1st September 2013 and 31st August 2014 you will need to apply now for a place at a primary school. Please apply online before 15th January at www.kent.gov.uk/primaryadmissions You must apply for a place even if you have a child at school already.

Staff News

I am delighted to be able to tell you that Mr Bird has appointed Mrs Miles to the position of EYFS leader to take over from Mrs Crane who currently performs this role. The EYFS leader's overriding responsibility is to focus on raising the standards of teaching and learning in the Early Years Foundation Stage.

The official hand over will be in January 2018, but in the meantime the two members of staff will be working closely together to ensure a smooth handover. Congratulations Mrs Miles!

Cross Country Club



Well done to all children in the Cross Country Team who ran their hearts out up very long steep hills on Wednesday at the second TWELLS District Tournament in Eridge Park. Special mention goes to Imogen in Year 3 who came in the top 30 for the second time against older girls who were mainly in Year 4. But, all our children demonstrated perseverance, determination and excellent sporting behaviour. I was very proud of them.

Lockdown Drill

As part of our Health and Safety policies and procedures the school has a Lock Down Policy. This Policy is also required by Ofsted.

Dates to remember

November 2017

15th Year 1 phonics meeting
24th (Fri) Non- Uniform day
28th (Tues) Y2 to Herstmonceaux
29th (Wed) 2nd hand uniform sale 3.15 in the library

December 2017

1st (Fri) cakes for fete
2nd (Sat) PTA Xmas fete 12 – 2.30
5th (Tues) Flu immunisations EYFS to Y4
7th (Thur) EYFS Xmas Production 10am & 2pm
8th (Fri) KS1 Xmas Production 10am & 2pm
13th (Wed) 2nd hand uniform sale - library
13th (Wed) Xmas Dinner KS1 & EYFS
14th (Thu) Xmas Dinner KS2
15th (Fri) Xmas Jumper Day
15th (Fri) 9.10 Rock Steady Concert
18th (Mon) KS2 Xmas Church Service 6pm – St Mark's Church
20th (Weds) Last day of term

January 2018

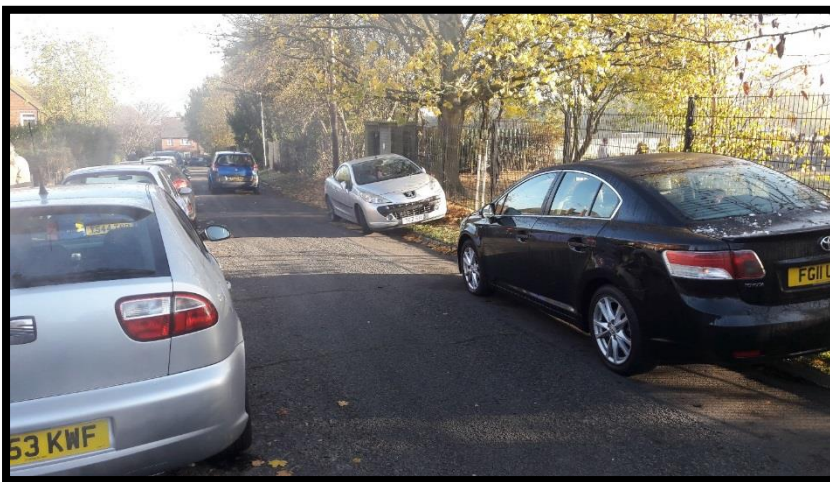
5th (Fri) children return to school

On very rare occasions it may be necessary to seal off the school so that it is not able to be entered from the outside. This will ensure that pupils, staff and visitors are safe in situations where there is a hazard in the school grounds or outside the school in the near vicinity.

A lockdown is implemented when there is serious security risks of the premises due to, for example, near-by chemical spillage, proximity of dangerous dogs, serious weather conditions or attempted access by unauthorised persons intent in causing harm/damage.

I am writing to inform parents that we will be practising our Lockdown Drill at some time during the end of November. Only the Senior Management Team will know the exact time and day. Staff will be talking to children about this a few days before in order to reassure them and to them give clear expectations and instructions.

Saunders Road at pick up – no words needed re damage to the verges and poor visibility for children crossing the road.



Nottidge Road

Is it you? We have had reports from several parents of a parent in a black BMW dropping his child off on this road and then driving off at speed endangering other children who are also accessing the school from this gate. Could I ask that if it is you you slow down. I have never had to name and shame in a newsletter and wouldn't want to!

Netball Club

Advance notice, Mrs White is unable to run the club on Thursday 30th November she says a huge SORRY. Your children may join me at cross country club if they wish, otherwise please make sure that you remember to collect them at 3.15pm!

Daily reading and Good Book certificates




Congratulations Farnham, what a huge improvement from last week. 😊

XTB Club – 23rd November

I'm afraid that this club is also cancelled due to staff training.

St Mark's Church Christmas services

Please find attached a flyer with details of their services over the Christmas period.

| Class | % daily readers last week | % daily readers this week | Good Book Certificate  |
|-------------------|---------------------------|---------------------------|---|
| EYFS Camber | Star of the week | | Nye |
| EYFS Windsor | Star of the week | | Roodee |
| Yr 1Arundel | 33 | 58 | Huwie |
| Yr 1 Bodiam | 50 | 36 | Edward |
| Y2 Leeds | 30 | 28 | Jakub |
| Y2 Pevensey | 21 | 7 | Aarush |
| Y3 Lewes | 17 | 30 | George |
| Y3 Deal | 57 | 45 | Alfie |
| Y4 Dover | 50 | 30 | Max |
| Y4 Farnham | 35 | 78 | Charlie |
| Y5 Hever | 51 | 45 | Rebecca |
| Y6 Rochester | 12 | 72 | Scott |

School Photos

Just a reminder that the money for photos has to be in by Wednesday 15th November. The company will be collecting the box at the end of the school day. If you miss this deadline you will have to go directly to the company yourself.

Christmas Cards

The PTA have advised that these will be sent home with your child on Monday. If you have placed a large order then please bring in a carrier bag!

Attendance 30/10/17 – 10/11/17

| Group | Presents | Authorised Absences | Unauthorised Absences | % Attend | % whole year |
|-----------------|-------------|---------------------|-----------------------|-------------|--------------|
| EY Camber | 95.4 | 1.5 | 3.1 | 95.4 | 97.0 |
| EY Windsor | 95.7 | 3.6 | 0.7 | 95.7 | 97.8 |
| Year 1 Arundel | 94.0 | 2.7 | 3.3 | 94.0 | 97.2 |
| Year 1 Bodiam | 94.2 | 5.1 | 0.7 | 94.2 | 94.2 |
| Y2 Leeds | 95.9 | 3.4 | 0.7 | 95.9 | 94.7 |
| Y2 Pevensey | 96.3 | 1.5 | 2.2 | 96.3 | 96.3 |
| Y3 Lewes | 88.8 | 5.4 | 5.8 | 88.8 | 92.3 |
| Year 3 Deal | 90.9 | 6.4 | 0.0 | 93.6 | 97.8 |
| Y4 Dover | 89.6 | 10.4 | 0.0 | 89.6 | 96.8 |
| Y4 Farnham | 97.8 | 1.3 | 0.9 | 97.8 | 97.6 |
| Y5 Hever | 98.6 | 1.4 | 0.0 | 98.6 | 95.9 |
| Y6 Rochester | 89.2 | 8.8 | 1.6 | 89.6 | 95.5 |
| Totals | 93.9 | 4.2 | 1.6 | 94.1 | 96.0 |

This was a poor attendance week with the whole school figure for the week well below 95%. Still on the bright side one class stood out above the rest, Hever, congratulations.

Yours sincerely

Mr R Dungate – Headteacher